

LOTS FOR SALE:

Encore Park - Mixed-Use Development
Brandon, SD



**1800 W. Ode Trail
Brandon, SD 57005**

SIZE: 39.40 Acres

PRICE: \$5.00/SF

ZONING: Light Industrial

UTILITIES: Available

Ellis & Eastern Company Rail Access

Can be subdivided -
Contact Broker for Details

Owner is a licensed real estate broker in South Dakota

Ron Nelson, CCIM
C: 605-728-7600
E: Ron@Ncommercial.com



www.Ncommercial.com

Nicole Daggett
C: 605-971-6706
E: Nicole@Ncommercial.com



LOTS FOR SALE:

Encore Park - Mixed-Use Development
Brandon, SD



Ron Nelson, CCIM
C: 605-728-7600
E: Ron@Ncommercial.com

Owner is a licensed real estate broker in South Dakota



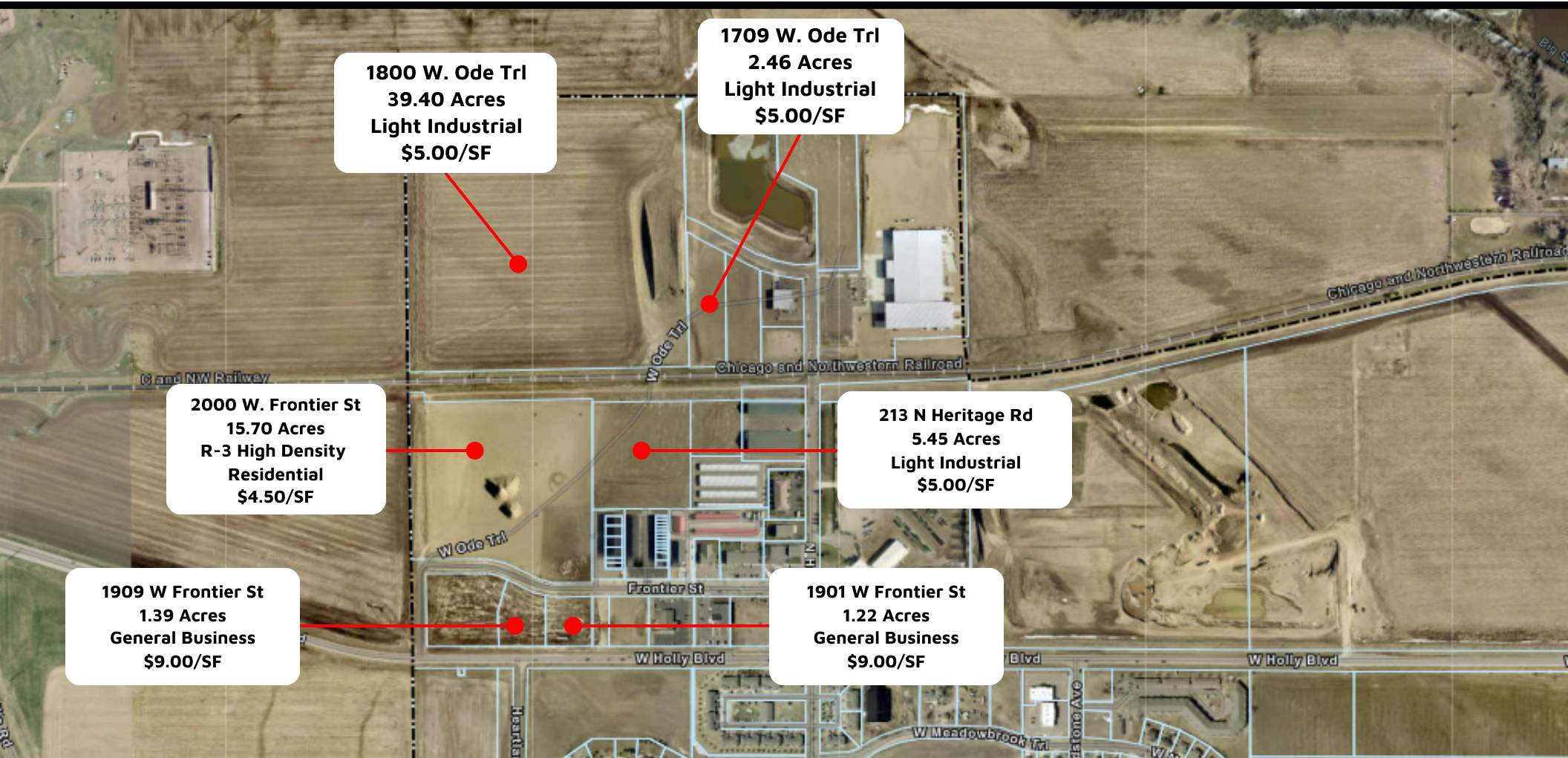
www.Ncommercial.com

Nicole Daggett
C: 605-971-6706
E: Nicole@Ncommercial.com

*Information contained herein provided by owner, city or county records. Purchaser or lessee should independently verify. All information contained herein deemed reliable but not guaranteed.

LOTS FOR SALE:

Encore Park - Mixed-Use Development
Brandon, SD



Owner is a licensed real estate broker in South Dakota

Ron Nelson, CCIM

C: 605-728-7600

E: Ron@Ncommercial.com



www.Ncommercial.com

Nicole Daggett

C: 605-971-6706

E: Nicole@Ncommercial.com