



## LOTS FOR SALE:

Encore Park - Mixed-Use Development  
Brandon, SD



**2000 W. Frontier St  
Brandon, SD 57005**

**SIZE:** 15.70 Acres

**PRICE:** \$4.50/SF

**ZONING:** High Density Residential

**UTILITIES:** Available

Possible Ellis & Eastern Company Rail Access  
Contact Broker for Details

Can be subdivided -  
Contact Broker for Details

**Ron Nelson, CCIM**  
C: 605-728-7600  
E: Ron@Ncommercial.com

Owner is a licensed real estate broker in South Dakota



[www.Ncommercial.com](http://www.Ncommercial.com)

**Nicole Daggett**  
C: 605-971-6706  
E: Nicole@Ncommercial.com

\*Information contained herein provided by owner, city or county records. Purchaser or lessee should independently verify. All information contained herein deemed reliable but not guaranteed.





## LOTS FOR SALE:

Encore Park - Mixed-Use Development  
Brandon, SD



**Ron Nelson, CCIM**  
C: 605-728-7600  
E: Ron@Ncommercial.com

Owner is a licensed real estate broker in South Dakota



[www.Ncommercial.com](http://www.Ncommercial.com)

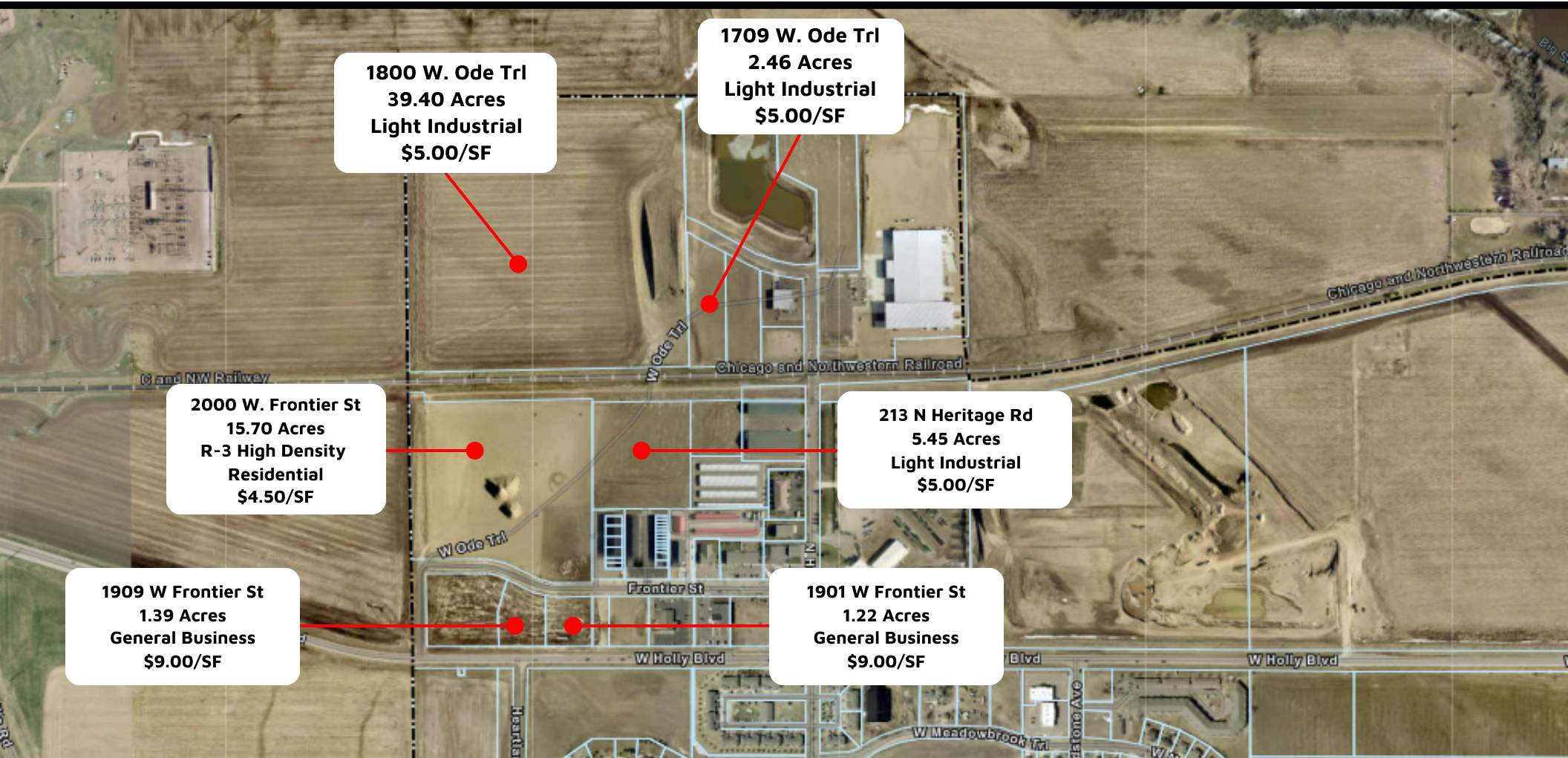
**Nicole Daggett**  
C: 605-971-6706  
E: Nicole@Ncommercial.com

\*Information contained herein provided by owner, city or county records. Purchaser or lessee should independently verify. All information contained herein deemed reliable but not guaranteed.



## LOTS FOR SALE:

Encore Park - Mixed-Use Development  
Brandon, SD



Owner is a licensed real estate broker in South Dakota

**Ron Nelson, CCIM**

C: 605-728-7600

E: Ron@Ncommercial.com



[www.Ncommercial.com](http://www.Ncommercial.com)

**Nicole Daggett**

C: 605-971-6706

E: Nicole@Ncommercial.com